



OPEN

## RNAi-directed knockdown in the cnidarian fish blood parasite *Sphaerospora molnari*

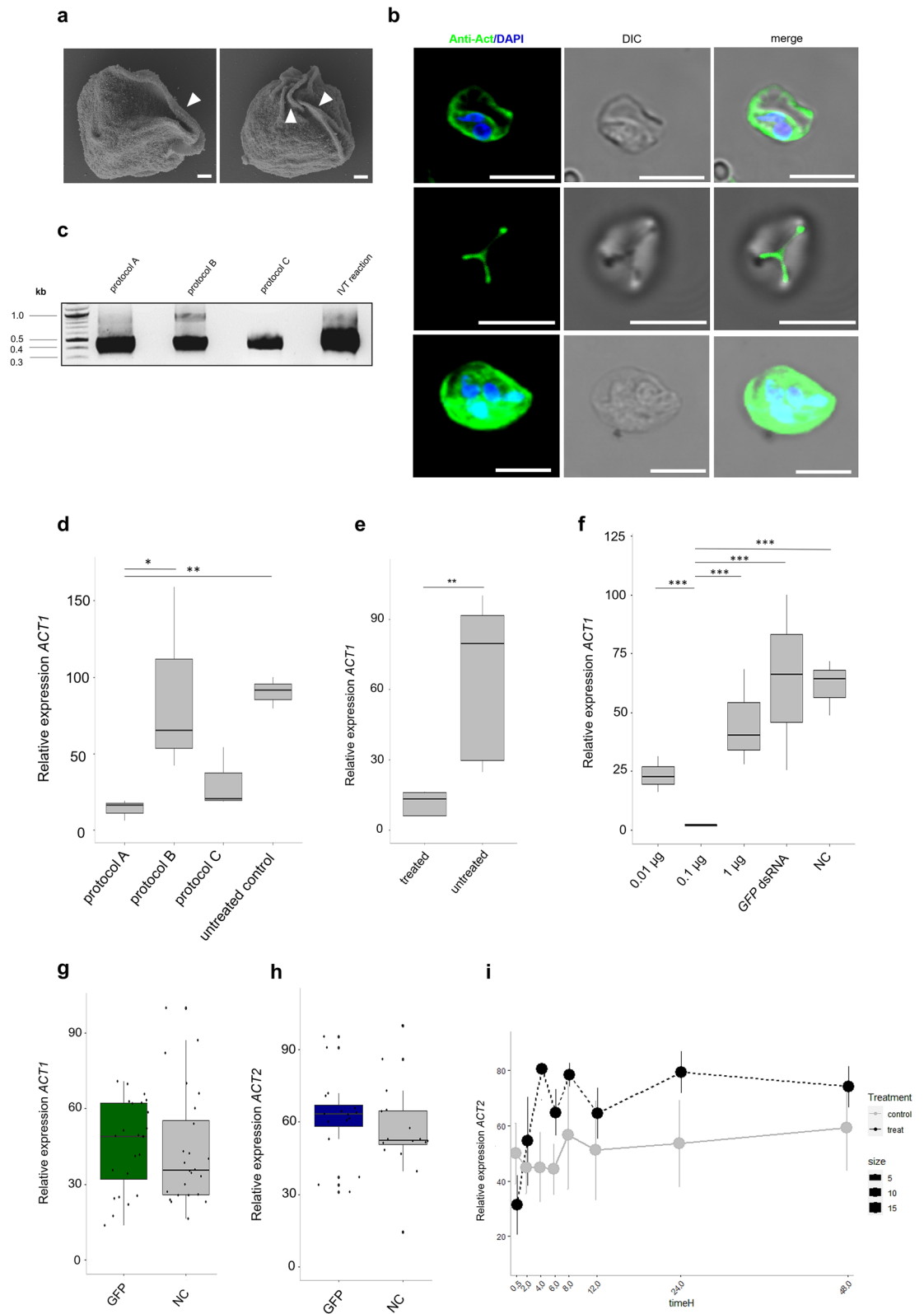
Jiří Kyslík<sup>1✉</sup>, Ana Born-Torrijos<sup>1,2</sup>, Astrid S. Holzer<sup>1,3</sup> & Anush Kosakyan<sup>1,4,5</sup>

RNA interference (RNAi) is an effective approach to suppress gene expression and monitor gene regulation. Despite its wide application, its use is limited in certain taxonomic groups, including cnidarians. Myxozoans are a unique group of cnidarian parasites that diverged from their free-living ancestors about 600 million years ago, with several species causing acute disease in farmed and wild fish populations. In this pioneering study we successfully applied RNAi in blood stages of the myxozoan *Sphaerospora molnari*, combining a dsRNA soaking approach, real-time PCR, confocal microscopy, and Western blotting. For proof of concept, we knocked down two unusual actins, one of which is known to play a critical role in *S. molnari* cell motility. We observed intracellular uptake of dsRNA after 30 min and accumulation in all cells of the typical myxozoan cell-in-cell structure. We successfully knocked down actin in *S. molnari* in vitro, with transient inhibition for 48 h. We observed the disruption of the cytoskeletal network within the primary cell and loss of the characteristic rotational cell motility. This RNAi workflow could significantly advance functional research within the Myxozoa, offering new prospects for investigating therapeutic targets and facilitating drug discovery against economically important fish parasites.

Post-transcriptional gene silencing elicited by the conserved cellular mechanism of RNA interference (RNAi), common in eukaryotes, represents a ubiquitous reverse-genetic application for studying gene function in biology. Several effector molecules are used to trigger the rapid degradation of target gene messenger RNA (mRNA) to regulate gene expression. By systematic delivery (e.g., electroporation, injection, soaking, etc.) of designed small interfering RNAs (siRNA) or double-stranded RNA (dsRNA), gene expression can be regulated in a targeted manner<sup>1</sup>. However, the non-specific, off-target and downstream effects of siRNAs can result in various changes in gene expression<sup>2</sup> and immune responses<sup>3</sup> via binding of unintended mRNAs that interfere with successful gene silencing. Due to the varying effectiveness of short interfering molecules in efficient gene silencing, soaking with double-stranded RNA (dsRNA) is a commonly applied delivery method<sup>4–8</sup>, which can overcome specificity issues reported in siRNA-based gene silencing studies<sup>9,10</sup>. However, using dsRNA in gene knockdown requires parameter optimization and evaluation regarding the target organism of use<sup>11</sup>. RNAi studies are demanding in non-model organisms that are difficult to cultivate in vitro, have complex life cycles, or are inappropriate for delivery methods for other reasons<sup>12–14</sup>. Among these, cnidarian parasites belonging to the Myxozoa represent a challenging model. These microscopic organisms with a simplified body plan explicitly form typical cell-in-cell formations consisting of primary cells containing secondary cells, which contain tertiary cells<sup>15</sup>, similar to a Russian doll model. This species-rich group of endoparasitic cnidarians possesses distinct structures for cell motility and adapted various infection mechanisms and parasitic strategies<sup>16–19</sup>. RNAi-mediated knockdown (KD) has only once been performed in myxozoans, by soaking of oligochaetes harboring *Myxobolus cerebralis*<sup>20</sup>, however, no study has yet targeted myxozoan developmental stages directly. To do so, parasite isolation from host cells and in vitro culture is a prerequisite, which is missing for Myxozoa mainly due to the drawback of their endoparasitic life strategy and, therefore, challenging extraction from their hosts<sup>21</sup>. Several studies have attempted the establishment of in vitro cultures of Myxozoa<sup>22–25</sup>. Neither long-term persistence nor viability was observed<sup>22</sup>. However, most recent advances in our laboratory achieved pure parasite isolation and short-term culture<sup>26</sup>.

The myxozoan *Sphaerospora molnari*, which infects common carp (*Cyprinus carpio*), represents a unique model as it belongs to a genus that forms proliferative blood stages with cell “twitching” movement<sup>27,28</sup>. This

<sup>1</sup>Institute of Parasitology, Biology Centre, Academy of Sciences of the Czech Republic, Ceske Budejovice, Czech Republic. <sup>2</sup>Department of Coastal Systems, NIOZ Royal Netherlands Institute for Sea Research, Den Burg, PO Box 59, 1790 AB Texel, The Netherlands. <sup>3</sup>Fish Health Division, University of Veterinary Medicine, Vienna, Austria. <sup>4</sup>Department of Life Sciences, University of Modena and Reggio Emilia, Modena, Italy. <sup>5</sup>National Biodiversity Future Center (NBFC), Palermo, Italy. ✉email: jiri.kyslik@paru.cas.cz



uniquely evolved non-directional self-axial cell rotation, named Membrane Fold Induced Tumbling motility (MFIT), is generated by spatially distributed membrane folds of the primary cell with rapid reabsorption and re-establishment<sup>28</sup>. A derived beta actin (*ACT1*), localized in the cytoplasm, membrane, and folds of the primary cell, has been identified as the molecular driver of this unique cell behavior<sup>28</sup>. Besides evolutionary conserved beta actins, which have a fundamental role in cellular processes, parasites evolved actin molecules with multiple functions related to invasion, cell migration, host evasion<sup>29</sup>. Recent findings have highlighted the dispensable role of myxozoan beta actins in cytoskeleton dynamics, cell motility, and spore stage creation, as identified in

**Figure 1.** Optimization of dsRNA purification and testing the efficacy of the RNAi functional assay in *Sphaerospora molnari* blood stages. **(a)** Scan electron microscopy of *S. molnari* blood stages with typical membrane folds (indicated by white arrows). **(b)** ACT1 protein localization in *S. molnari* blood stages showing concentration in membrane folds (first and second line) and in the cytoplasm of primary cell (third line). ACT1 staining antibody (green) and nuclear staining with DAPI (blue), interference contrast image (DIC), ACT1 and DAPI merged with the DIC. Scale bars—1  $\mu\text{m}$  for **(a)** 5  $\mu\text{m}$  for **(b)**. **(c)** Purified ACT1 dsRNA visualized by agarose gel electrophoresis (protocol A (lane 1): DNase treatment followed by phenol/chloroform extraction and overnight ethanol precipitation, protocol B (lane 2): DNaseI treatment and ethanol precipitation, protocol C (lane 3): Manufactured protocol of dsRNA purification including digestion of shRNA and dsDNA contamination, in vitro transcription reaction (IVT reaction; lane 4): in vitro transcribed dsRNA from manufactured protocol. Original gel is presented in Supplementary Fig. 6. **(d)** Comparison of ACT1 gene knockdown in tested protocols of dsRNA purification (A–C) described in **(c)** and negative (untreated) control after 24 h post incubation (n = 3). X-axis: protocols of dsRNA purification described in **(c)** and negative control ACT1 gene expression in *S. molnari* cells (untreated control), Y-axis: relative gene expression values of ACT1. **(e)** Relative gene expression of ACT1 gene knockdown in *S. molnari* cells with purified dsRNA from protocol A (n = 5). X-axis: ACT1 KD cells (treated) and negative control ACT1 gene expression in *S. molnari* cells (untreated), Y-axis: relative gene expression values of ACT1. **(f)** dsRNA-concentration dependent relative gene expression of ACT1 (n = 3). X-axis: serial concentrations ( $\mu\text{g}/\mu\text{l}$ ), Y-axis: relative gene expression values of ACT1. Housekeeping genes EF2 and GAPDH were used as the reference. **(g)** Relative gene expression of ACT1 in GFP non-target control dsRNA and untreated negative control (NC) over 48 h of KD (n = 24). Y-axis: relative gene expression values of ACT1. Black circles represent jittered raw data. **(h)** Relative gene expression of ACT2 on GFP control dsRNA and untreated negative control (NC) over 48 h of KD (n = 16). Y-axis: relative gene expression values of ACT1. Black circles represent jittered raw data. **(i)** Off-target effect analysis of relative gene expression of ACT2 upon knockdown of ACT1 (n = 3). X-axis: time points in hours (timeH), Y-axis: relative gene expression values of ACT1. In **(d–h)**, housekeeping genes EF2 and GAPDH were used as the reference. Mean values relate to a dashed (treatment) or continuous (control) line over time. Error bars represent standard errors. In the boxplots, black horizontal lines represent the median, boxes represent 50% of the values, and upper and lower whiskers represent values > 75th and < 25th percentiles. Significant differences between groups are indicated in the figures with an asterisk, following \* $p < 0.05$ , \*\* $p < 0.01$ , \*\*\* $p < 0.001$ .

proteomic data of *Ceratonova shasta*<sup>30</sup>. Compared to the classical fibrillar actin (F-actin) of the cytoskeleton used for adhesion and motility in *C. shasta*<sup>18,19</sup>, *S. molnari* displays short actin filaments with negative staining effect for custom phalloidin due to a derived gene sequence characteristic<sup>28</sup>. Besides multicellular Myxozoa, unicellular parasites of the phylum Apicomplexa also display short actin fibers that enables a rapid protein turnover and thus leads to negative imaging of actin fibers<sup>31–33</sup>. However, the structural and molecular relatedness of these intriguing actin molecules of Myxozoa to those of other parasitic species highlights the need for a better understanding of their roles by functional study. Here, we report KD of atypical actins in *S. molnari* cells. Following recently described protocols for parasite extraction<sup>26</sup>, we optimized and tested the systemic delivery of dsRNA into in vitro cultured parasite cells. We observed the phenotypic effect of silenced ACT1 on parasite cell motility. Thus, this study highlights the successful utilization of RNAi in Myxozoa and opens new paths for gene function studies like mechanisms of drug resistance, host evasion tactics or developmental processes in these ancient and remarkable parasitic organisms.

## Results

### Efficient gene knockdown requires complete DNA removal

We investigated various approaches to test and improve gene KD efficiency in *S. molnari* cells. Given the formerly identified atypical beta-actins of *S. molnari*<sup>28</sup>, we selected two homologs (ACT1 and ACT2, Supplementary Fig. 1), with emphasis on the unusual Actin1 protein (ACT1), localized in the primary cell cytoplasm and membrane folds of *S. molnari* blood stages (Fig. 1a, b). First, we produced dsRNAs targeting ACT1 (Supplementary Fig. 1) using three different protocols (protocols A–C) and examined their purity on agarose gel (Fig. 1c). Apart from one approach showing the presence of incomplete removal of DNA template displayed by an upper band (Fig. 1c, protocol B), we obtained single band size purified dsRNA (Fig. 1c). We then estimated maximum silencing efficiency of ACT1 using RT-qPCR and calculated the percentage of decrease (Fig. 1d), reaching 85%, by applying DNase I treatment followed by phenol/chloroform extraction and ethanol precipitation (Fig. 1c, protocol A), compared to untreated control (Fig. 1d, LM, est = 2.522, SE = 0.351,  $p < 0.001$ ). Omitting the phenol/chloroform step (Fig. 1c, protocol B) resulted in a slightly lower silencing efficiency of ACT1 (2% less compared to protocol A; Fig. 1d), without significant difference (LM, est = 0.173, SE = 0.446,  $p = 0.979$ ). In contrast, the manufacturer's purification protocol of the commercial dsRNA synthesis kit showed silencing efficiency comparable to protocol A (66%), however, the low yield of purified dsRNAs resulted in inconsistencies in gene silencing of both ACT1 and ACT2 in follow-on experiments (Supplementary Fig. 2a, b). Additionally, we tested unpurified in vitro transcribed dsRNA (Fig. 1c, Supplementary Fig. 1) in RNAi assays but did not observe consistent gene KD for either of the actin homologs (ACT1 and ACT2) across experiments, predicting potentially unreliable outcomes in future experiments. The consistency of effective gene KD observed in dsRNA produced by protocol A was further confirmed by five independent biological replicates, showing low variation of downregulation of gene expression across experiments (Fig. 1e, LM, est = 1.657, SE = 0.371,  $p = 0.002$ ).

### RNAi efficiency in *S. molnari* shows dose-dependent uptake of dsRNA

To determine the optimal concentration of dsRNA for efficient gene KD, we tested three different concentrations of *ACT1* dsRNA ranging from 0.01 to 1  $\mu\text{g}/\mu\text{L}$  (Fig. 1f), including one untreated control (NC) and a non-target control utilizing a gene non-existent in Myxozoa (e.g., green fluorescent protein (GFP), hereafter *GFP* dsRNA). RT-qPCR analysis of mRNA levels of *ACT1* revealed that the most effective gene silencing, with a reduction of gene expression of 97%, was achieved at a concentration of 0.1  $\mu\text{g}/\mu\text{L}$  (Fig. 1f), showing significant differences to all other groups (LM,  $\text{est} = -3.075$  to 3.434,  $\text{SE} = 0.342$ ,  $p < 0.001$ ). The use of a tenfold higher concentration (1  $\mu\text{g}/\mu\text{L}$ ) resulted in only a 27% reduction, while the lower concentration (0.01  $\mu\text{g}/\mu\text{L}$ ) showed 63% reduction compared to untreated control samples (Fig. 1f), although none of these differences were significant (LM,  $\text{posthoc est} = -0.635$  to 0.995,  $\text{SE} = 0.342$ ,  $p > 0.05$ ). We also verified the efficiency and specificity of our RNAi assay using non-target *GFP* dsRNA while measuring gene expression of *ACT1* and *ACT2* prior to silencing our target genes. In both actin genes, there was no overall unintended pattern of downregulation in gene expression compared to untreated controls, over a 48-h period of incubation (Fig. 1g, h). Neither the relative expression of *ACT1* (Fig. 1g) nor *ACT2* (Fig. 1h) differed between the *GFP* group and the control (LM, *ACT1*:  $\text{est} = -0.075$ ,  $\text{SE} = 0.137$ ,  $p = 0.586$ ; *ACT2*:  $\text{est} = -0.108$ ,  $\text{SE} = 0.131$ ,  $p = 0.415$ ). Next, we inspected the off-target effect by measuring gene expression of the close gene ortholog *ACT2* by KD of *ACT1* (Fig. 1i). While *ACT1* was silenced, we did not observe differences in the relative expression of *ACT2* between treatments or over time (LM,  $\text{treatment: est} = -0.207$ ,  $\text{SE} = 0.163$ ,  $p = 0.212$ ;  $\text{time: est} = -0.005$ ,  $\text{SE} = 0.008$ ,  $p = 0.530$ ).

### dsRNA uptake and soaking strategy in *S. molnari* blood stages

To prove that dsRNA was successfully taken up by *S. molnari* cells using the soaking approach, we utilized Cy3-labeled dsRNA of *ACT1*. Prior to incubation, we examined labeled dsRNA on an agarose gel to ensure the correct fluorescent labeling procedure (Fig. 2a). While incubating labeled dsRNA with *S. molnari* cells, we detected an increasing accumulation of perinuclear foci in the cytoplasm of primary and secondary cells, over time, using confocal microscopy (Fig. 2b). Interestingly, the internalized dsRNA appeared within the primary cell cytoplasm after 30 min post-incubation (Fig. 2b). Additionally, we performed a soaking assay with non-target control encoding *GFP* dsRNA and found similar internalization and distribution of labeled dsRNA within *S. molnari* cells after 24 h (Fig. 2c). We simultaneously analyzed gene expression of *ACT1* while using Cy3-labeled dsRNA, which resulted in effective KD of the target *ACT1* gene after 30 min and 24 h compared to untreated controls (Fig. 2d, LM,  $\text{posthoc 30 min: est} = 0.954$ ,  $\text{SE} = 0.214$ ,  $p = 0.009$ , and 24 h:  $\text{est} = 1.142$ ,  $\text{SE} = 0.214$ ,  $p = 0.003$ ).

### RNAi functional assay in *S. molnari* cells

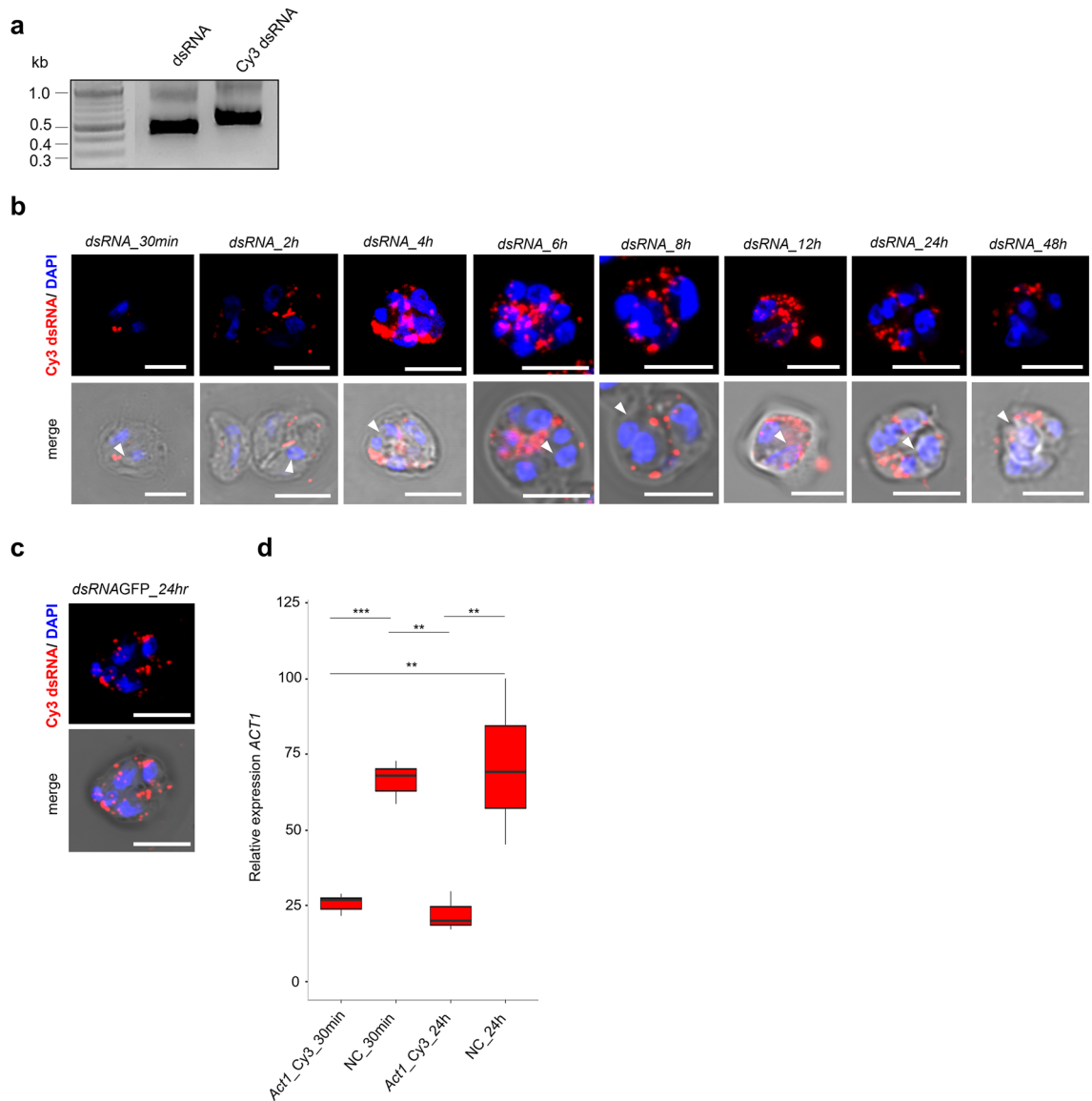
We conducted a functional RNA interference (RNAi) assay to investigate the effect of gene KD on *ACT1* and *ACT2* genes in *S. molnari* blood stages. Our analysis revealed a significant reduction in mRNA expression levels of both actin genes after 30 min, which persisted for up to 48 h (Fig. 3a, b). The relative expression of both, *ACT1* and *ACT2* was lower in the treatment than in control (LM, *ACT1*  $\text{treatment: est} = 1.093$ ,  $\text{SE} = 0.190$ ,  $p < 0.001$ ; *ACT2*  $\text{treatment: est} = 0.564$ ,  $\text{SE} = 0.162$ ,  $p = 0.001$ ), showing no significant differences over time for *ACT1* (Fig. 3a LM,  $\text{time: est} = -0.006$ ,  $\text{SE} = 0.007$ ,  $p = 0.414$ ) and a slight increase over time in both groups for *ACT2* (Fig. 3b, LM,  $\text{time: est} = 0.016$ ,  $\text{SE} = 0.006$ ,  $p = 0.009$ ). We also examined *S. molnari* cells under the confocal microscope and observed no difference in fluorescence after 24 h (Fig. 3c). However, a lower fluorescent labeling signal was detected after 48 h of KD (Fig. 3c). Subsequently, we performed fluorescence intensity quantification of KD in *S. molnari* (Fig. 3d). Corrected total cell fluorescence (CTCF) intensity analysis (Fig. 3d) revealed a significant decrease of *ACT1* after 48 h compared to 24 h and to controls at 24 h and 48 h (LM,  $\text{posthoc, est} = -1.270$  to 1.742,  $\text{SE} = 0.305$ ,  $p = 0.004$ – $< 0.001$ ). The comparison of the fluorescence intensity with protein concentration in the cells using western blotting showed a considerable reduction in protein expression levels after 48 h of KD (Fig. 3e). However, no substantial decrease of protein was detected at 24 h compared to control in our RNAi assay (Fig. 3e).

### Cytochalasin D removal induces recovery of gene expression of atypical actins

To understand the expression dynamics of target actins upon inhibition and reversibility of actin polymerization, we incubated *S. molnari* blood stages with cytochalasin D (Cyto-D) for 24 h. Overall, the removal of Cyto-D from cell culture resulted in the recovery of gene expression for both actin genes (Fig. 3f). After 24 h of incubation with Cyto-D, relative gene expression levels of *ACT1* and *ACT2* did not show significant differences between cytochalasin D-treated cells (Cyto-D) and the untreated negative control (LM, *ACT1*  $\text{est} = 0.109$ ,  $\text{SE} = 0.249$ ,  $p = 0.680$ ; *ACT2*  $\text{est} = 0.385$ ,  $\text{SE} = 0.409$ ,  $p = 0.389$ ). However, following the removal of Cyto-D after 30 min of incubation, gene expression of *ACT1* increased compared to the Cyto-D treated cells (LM,  $\text{est} = 0.657$ ,  $\text{SE} = 0.222$ ,  $p = 0.03$ ), suggesting a recovery of gene expression for *ACT1*. This trend was not the case for *ACT2*, as gene expression for *ACT2* did not show any changes after the removal of Cyto-D (LM,  $\text{CytoD/-: est} = -0.500$ ,  $\text{SE} = 0.366$ ,  $p = 0.229$ ).

### Silencing of actin results in disintegration of actin cytoskeleton of *S. molnari* primary cells

To investigate the silencing of *ACT1* on the cytoskeleton of *S. molnari* blood stages, we visualized *ACT1* in parasite cells post RNAi. We observed distinct changes in the cytoskeleton of the primary cell cytoplasm of blood stages (Fig. 4a, b). *ACT1* KD cells showed a disintegrated actin network in the primary cell cytoplasm compared to untreated controls after 24 h (Fig. 4a). The protein signal of *ACT1* was largely absent from the cytoplasm of primary cells after 48 h (Fig. 4b). Moreover, we detected the appearance of actin patches at the cell periphery in *ACT1* KD cells after 48 h (Fig. 4b). Control parasites displayed actin-rich areas in either the cytoplasm or the membrane of the primary cells after 24 h and 48 h (Fig. 4a, b).



**Figure 2.** Cellular uptake of dsRNA in *S. molnari* cells. **(a)** Negative color agarose gel of purified dsRNA (dsRNA) and Cy3-labeled dsRNA (Cy3 dsRNA). Ladder indicates band sizes in kilobases (kb). Original gel is presented in Supplementary Fig. 7. **(b)** Cellular uptake of Cy3 dsRNA by *S. molnari* blood stages over time (30 min to 48 h) in KD assay, Cy3 (red, dsRNA) combined with nuclear DAPI staining (blue). Secondary cells are indicated by arrows. **(c)** Cy3-labeled GFP dsRNA in *S. molnari* blood stage after 24 h post incubation. **(d)** Relative gene expression of *ACT1* by *S. molnari* soaked with Cy3-labeled *ACT1* dsRNA, after 30 min and 24 h of incubation ( $n = 3$ ). Bars indicate gene expression relative to untreated control samples (NC). X-axis: Cy3-labeled samples (Act1\_Cy3) and negative controls (NC). Y-axis: relative gene expression values of *ACT1*. Housekeeping genes EF2 and GAPDH were used as the reference. In the boxplots, black horizontal lines represent the median, boxes represent 50% of the values, and upper and lower whiskers represent values  $> 75$ th and  $< 25$ th percentiles. Significant differences between groups are indicated in the figures with an asterisk, following  $*p < 0.05$ ,  $**p < 0.01$ ,  $***p < 0.001$ . Scale bars—5  $\mu\text{m}$ .

### Gene knockdown altered cell rotational movement of *S. molnari*

We investigated the effect of dsRNA-mediated KD of *ACT1* and *ACT2* on the phenotype of *S. molnari* blood stages. Overall, there was no alternation observed in the membrane folds emergence upon KD of both *ACT1* and *ACT2* on the cell surface of *S. molnari* blood stages. We observed loss of axial motility with continuous forming of membrane folds in *ACT1* KD cells (Supplementary video 1) compared to untreated control (Supplementary video 2) and GFP dsRNA-treated cells at 48 h (Supplementary video 3). These findings were consistent with the reduced fluorescence intensity observed after 48 h (Fig. 3d), while neither motility nor fluorescence intensity was altered after only 24 h of *ACT1* KD (Supplementary video 4) when compared to the GFP dsRNA group (Supplementary video 5) and the untreated control (Supplementary video 6). Furthermore, western blot analysis revealed a drop in protein expression at 48 h but without a complete lack of protein expression in *S. molnari* (Fig. 3e). Conversely, KD of *ACT1* did not result in any significant changes in cell morphology compared to

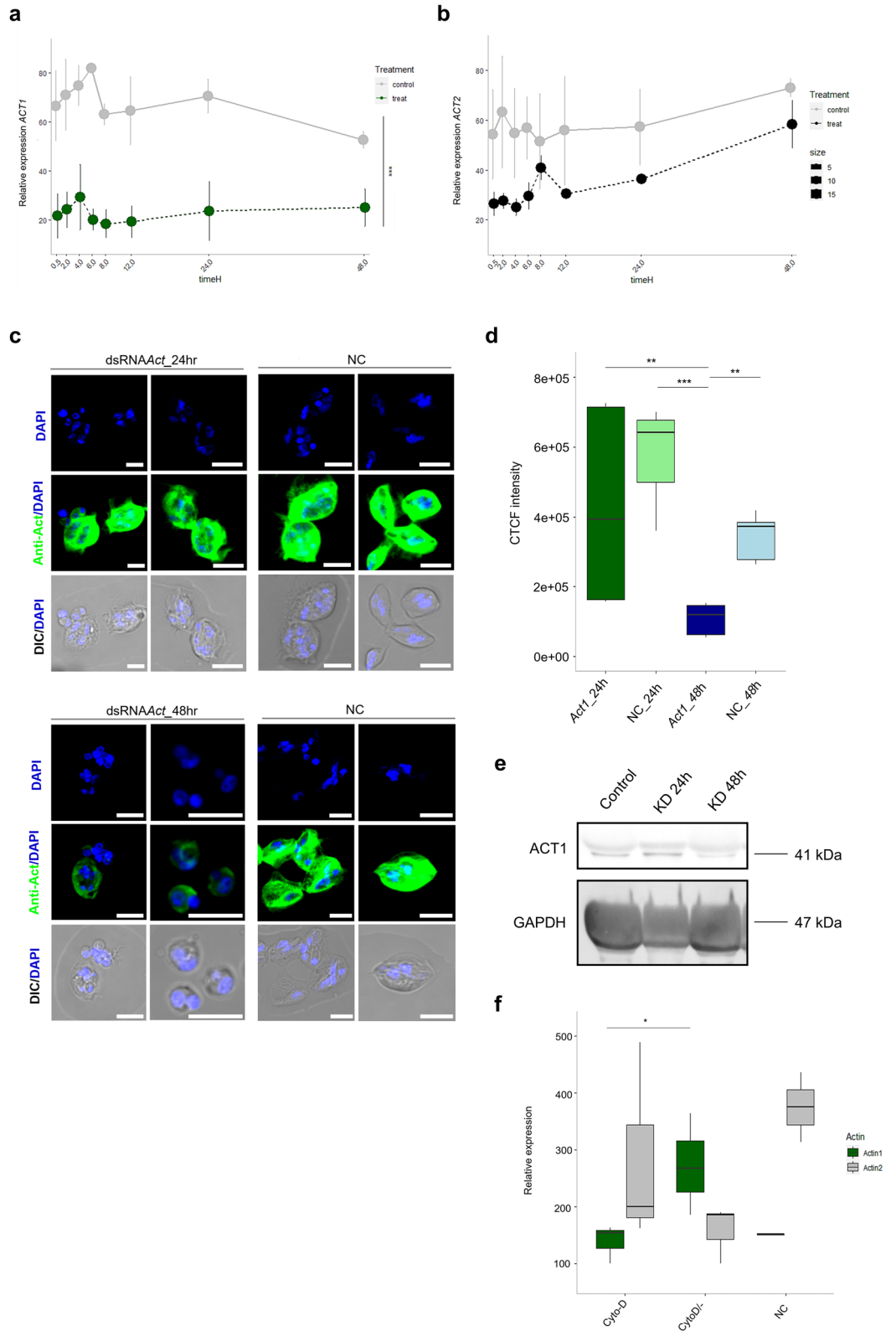
**Figure 3.** Knockdown assays in *S. molnari* blood stages and expression of actins in cells during actin polymerisation inhibition. **(a)** Relative gene expression of *ACT1* KD (green dots) compared to negative control (grey dots) in *S. molnari* over 48 h of gene silencing (n = 3). **(b)** Relative gene expression of *ACT2* KD (black dots) compared to negative control (grey dots) in *S. molnari* cells over 48 h (n = 3). In **(a,b)**, mean values are connected with a dashed (treatment) or continuous (control) line over time. Error bars represent standard errors. **(c)** Immunolabeling of *S. molnari* blood stages stained for ACT1 (green) showing slight decrease of protein expression in KD *S. molnari* cells after 24 h (*ACT1* KD 24 h) and strong decrease after 48 h (*ACT1* KD 48 h) compared to control cells (NC). Nuclei are stained with DAPI (blue) and merged with differential contrast images (DIC). Scale bars—5  $\mu$ m. **(d)** Corrected total fluorescent intensity (CTCF) in *S. molnari* cells after 24 h and 48 h compared to control cells (NC) (n = 5). **(e)** Western blot showing protein quantities of ACT1 and GAPDH (housekeeping gene) after KD of *ACT1* in *S. molnari* cells after 24 h (KD 24 h), and 48 h (KD 48 h), displaying reduced protein level of *ACT1* at 48 h in the RNAi group vs the Control. Original blots are presented in Supplementary Fig. 8. **(f)** Relative gene expression of *ACT1* (green box plots), *ACT2* (grey box plots) and negative control (NC) in *S. molnari* cells exposed to cytochalasin D (Cyto-D) (n = 3). X-axis: cytochalasin D-treated cells (Cyto-D), washed Cyto-D cells (Cyto-D/–) and negative control (NC). Y-axis: relative gene expression values of *ACT1* and *ACT2*. Housekeeping genes EF2 and GAPDH were used as the reference. In the boxplots, black horizontal lines represent the median, boxes represent 50% of the values, and upper and lower whiskers represent values > 75th and < 25th percentiles. Significant differences between groups are indicated in the figures with an asterisk, following \*p < 0.05, \*\*p < 0.01, \*\*\*p < 0.001.

control and non-target-treated cells. Silencing of *ACT2* did not alter cell motility of *S. molnari* blood stages after 24 h or 48 h of KD (Supplementary videos 7 and 8).

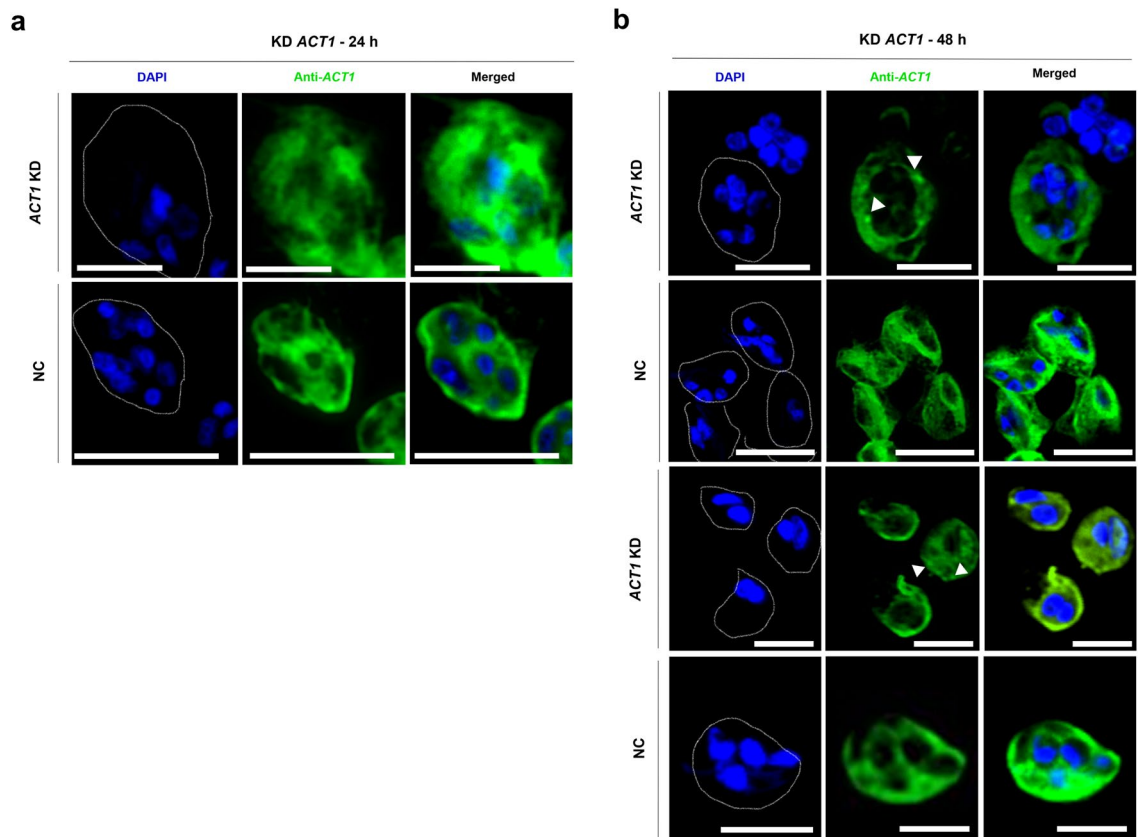
## Discussion

In the present study, we performed the RNAi-mediated gene knockdown (KD) of two atypical actins, *ACT1* and *ACT2*, within the causative agent of common carp gill sphaerosporosis, *Sphaerospora molnari*. Our study exemplifies gene silencing confined exclusively to purified cultured stages of the parasite. A previous study<sup>20</sup> employed small interfering RNA (siRNA) targeting a myxozoan serine protease, delivered through soaking an infected oligochaete host. This approach demonstrated sustained knockdown of myxozoan-infected oligochaetes collected over the 3 months period, with the most pronounced gene silencing observed at the 24-h mark. The transient nature of RNAi, typically lasting only for a few days<sup>4,34</sup>, requires the continuous presence of either siRNA or double-stranded RNA (dsRNA), consistent with our findings of sustained knockdown for a duration of 48 h.

To ensure RNA inhibition in all cells of the unique cell-in-cell structure of myxozoans, we used a simple soaking strategy of dsRNA into myxozoan multicellular cells, rather than applying short hairpin RNA molecules (siRNA) via electroporation. The utilization of the electroporation delivery system poses challenges for Myxozoa due to the cell-in-cell structure observed in myxozoan proliferative stages, impeding the successful integration of shRNAs into all cells within these stages. We optimized the purification and dosage of dsRNA in the parasite cell culture. Owing to the perplexing inconsistencies in RNA yield and gene KD results observed with commercially produced dsRNA, we tested alternative approaches for dsRNA purification. Hence, we presume that the low yield of dsRNA obtained is likely a result of incomplete elution, attributed to the limited presence of chaotropic agents and cations in the buffers of commercial kits, as reported<sup>35</sup>. In comparison to other studies using dsRNA precipitation<sup>36</sup> and phenol/chloroform extraction<sup>37</sup>, we amended the stable production of pure and functional dsRNA. As demonstrated, we omitted the use of RNase A in our approach based on previous results that showed the susceptibility of dsRNA to RNase A digestion<sup>38</sup>. Our results support previous applications of the cost-effective soaking approach for introducing dsRNA into cells<sup>4,7,39</sup>. Regardless of delivery methods for RNAi, rapid cellular uptake of dsRNA into cells has been reported<sup>40–42</sup>. Similarly, *S. molnari* cells displayed the presence of intracellular dsRNA within 30 min of incubation, allowing for further systemic spread within the complex cell-in-cell stage structures defined for myxozoans<sup>43</sup>. However, the exact mechanism of cell entry of dsRNA in Myxozoa remains unclear. We have not yet identified the transmembrane protein SID-1 in the transcriptome of *S. molnari* (PRJNA522909)<sup>44</sup> that allows passive cellular uptake as an entry transporter of dsRNA, described in model nematode *Caenorhabditis elegans*<sup>45,46</sup>. Conversely, as the essential role of SID for systemic effect and cell-to-cell transport of dsRNA, the absence of this evolutionarily conserved homolog in Myxozoa suggests yet unknown machinery of systemic spread of RNAi in myxozoan multicellular proliferative stages. Nonetheless, the lack of this protein can be sustained by scavenger receptors, mediating the uptake mechanism<sup>47,48</sup>. Alternatively, the cellular uptake might be triggered by endocytosis<sup>49</sup>. In our study, we found that continuous exposure to dsRNA is necessary to achieve long-term effective gene KD. However, long-term in vitro culture for the temporary gene silencing in culture is quintessential to mimic in vivo conditions<sup>50</sup>. Our experiments showed that maximum gene silencing effect and cell viability were observed up to 48 h, but prolonged co-culture with dsRNA for 62 h resulted in inconsistent and less effective knockdown and rapid cell death (Supplementary Fig. 3). This was likely a result of parasites dying in the in vitro culture. Longer-term survival of *S. molnari* in vitro would be an essential requirement to study the longevity of the KD effect in vitro and in vivo within the intermediate host but has not presently been achieved. We empirically determined an optimal concentration of dsRNA to trigger efficient gene KD that shows a maximum gene silencing effect at a lower concentration of dsRNA rather than higher. Such concentration-effect has been also observed using RNAi in other organisms<sup>51</sup>. To some extent, higher doses of dsRNA show more robust gene silencing<sup>52</sup>. By contrast, our results demonstrate low efficiency of gene knockdown while applying a high concentration of dsRNA, also reported in studies primarily using insect model species<sup>53</sup>. However, inefficient RNAi employing a high dose of dsRNA is hypothesized with increasing



RNAse activity that instigates degradation of dsRNA<sup>54</sup>. In contrast, siRNA-based gene silencing displays opposite trends and increasing efficiency at higher doses<sup>55–57</sup>. Further characterizations showed that several mechanisms and factors influence efficiency mostly in insect models<sup>58–60</sup>. The factors that affect RNAi efficacy in *S. molnari* blood stages with higher concentrations are yet unknown. In this study, we used GFP as a non-target exogenous control based on the absence of this gene in Myxozoa genomic data, although this gene is endogenously present in free-living Cnidaria<sup>61</sup> as well as other GFP-like homologs across Metazoa<sup>62</sup>. While several reports regarding off-target or indirect effects of GFP on gene expression in RNAi studies exist<sup>63–65</sup>, we anticipated that using



**Figure 4.** Actin knockdown in *S. molnari* blood stages shows disintegration of cytoskeleton in cytoplasm of the primary cells. **(a,b)** Immunolabeling of *S. molnari* blood stages stained for ACT1 (green) and DAPI-stained nuclei (blue) showing lack of actin network in cytoplasm of primary cells and appearance of actin patches (indicated by white arrows) after 24 h **(a)** and 48 h **(b)** of *ACT1* KD compared to untreated controls (NC). Scale bars—5  $\mu\text{m}$ .

GFP as non-target control for RNAi-based studies in our model species *S. molnari* can be employed. However, deeper profiling of differential gene expression in knockdown targeting GFP could explore any unintended non-target effects on a broad scale. Additionally, unlike the previous study using one predesigned siRNA control in Myxozoa<sup>20</sup>, we matched another negative control to each silenced target to monitor the expressional profiles of the targeted actins and validate experimental conditions during RNAi experiments.

We demonstrated here for the first-time knockdown targeting atypical beta-actin orthologs based on their suspected role in an unconventional type of cell motility of *S. molnari* blood stages, previously reported by<sup>28</sup>. Knockdown of *ACT1* showed decreased fluorescence signal that supports downregulation of the gene expression in *S. molnari* blood stages. However, in comparison with siRNA-based beta-actin gene silencing in human fibroblasts<sup>66</sup>, a total absence of the fluorescent signal was not observed in our experiments. Overall, *ACT1* knockdown altered cell motility of *S. molnari* blood stages. However, any deleterious phenotypic effects, including degradation of overall cell structure or rapid cell death, were not observed. This result is in striking contrast with altered tissue morphology of beta-actin knockdown in evolutionarily related cnidarian sea anemone *Aiptasia pallida*<sup>67</sup>. In our model *S. molnari*, the reduced expression of *ACT1* during KD led to an apparent lack of rotational movement of the cells under culture conditions, together with subcellular localization showing a lower signal of the protein within the primary cell membrane after 48 h of KD. We note that, despite successful *ACT1* KD during the assay, the cells retained the ability of MFIT motility, suggesting the role of actomyosin contractility in *S. molnari* motility<sup>28</sup> and incomplete ablation of *ACT1* gene expression. This may constrain the application of RNAi in gene function studies<sup>68,69</sup>. However, the exact machinery triggering the rotational movements of *S. molnari* around the axis is not completely understood. It is likely that cell polarity and microtubule dynamics play a key role in rotational motion<sup>70</sup>. Immunolabeling analysis of cells with silenced *ACT1* revealed disintegration of the actin cytoskeleton in primary cell cytoplasm accompanied by the appearance of actin patches<sup>71</sup>. This less extensive actin network was also observed in knockdown of actin genes in gene-silencing studies in other organisms<sup>50,72</sup>. Nevertheless, *S. molnari* cells were still viable and unimpaired. This might indicate the dispensable role of actins as observed by complete gene deletion via knockout assays in mice models<sup>73</sup>. Therefore, it is tempting to note that changes in the cytoskeleton, notably actin patches can be coupled with changes related to the cell recovery after actin depolymerization<sup>74</sup>. To better understand, a future assay of cell proliferation and apoptosis can explore cytoskeletal changes upon gene silencing in *S. molnari*. Overall, suppressing the gene expression of *ACT2*, whose cellular distribution in *S. molnari* is still unknown, did not alter cell motility. This is coherent with previous observations reporting no effect on the cell speed upon knockdown of beta-cytoplasmic



actin<sup>75</sup>. Disruption of actin polymerization with cytochalasin D (Cyto-D) suggests that actomyosin contractility is an important factor for motile cells<sup>28,76,77</sup>. As previous evidence of Cyto-D removal profoundly affects the return of actin gene expression to basal levels<sup>78</sup>, both targeted actin orthologs display similar gene recovery. Conversely, Cyto-D induces actin mRNA expression with protein synthesis targeting the regulatory region of beta-actin promoters<sup>78</sup>. Intriguingly, *S. molnari* cells treated with Cyto-D exhibit elevated mRNA levels of the *ACT2* ortholog. This suggests that pharmacological inhibition of actins induces the synthesis of other actin genes while altering cytoskeletal organization<sup>79</sup>. It is tempting to speculate whether *ACT2* is hence involved in cell division<sup>80,81</sup> or contributes to other non-redundant biological roles<sup>82</sup>. Indeed, KD of both actin isoforms did not result in the reduction or loss of membrane folds creation in motile *S. molnari* blood stages. This might indicate that the membrane folds on the surface of the *S. molnari* cells could be driven by other factors, such as tyrosine kinases activating actin remodeling and, thus, the formation of these membrane extensions<sup>83</sup>.

Currently, the major obstacle for further RNAi research in myxozoans lies in the lack of stable long-term in vitro-based culture of myxozoan parasite stages that would enable the study of the developmental processes upon gene editing. In our work, the parasite viability limited us to monitor the longevity of RNAi knockdown. Despite parasite cell proliferation and short-term viability in cultures reported<sup>23</sup>, the proliferation of the parasitic stages and plasmodium-spore transition under cultured conditions need further optimization. Expanding the range of species and adapting our optimized RNAi technique could benefit future studies. Despite the lack of knowledge in driving components beyond the motility in *S. molnari* blood stages, the RNAi approach in our in vitro system allows functional studies of other genes. Ultimately, the transgenesis in Myxozoa, encompassing gene knockout and other genome-editing methodologies, represents a significant advancement in the exploration of gene function within these economically significant and evolutionarily derived parasites.

## Methods

### Ethical statement

All experimental protocols were approved by the Resort Professional Commission of the CAS for Approval of Projects of Experiments on Animals. Prior to the collection of *S. molnari* blood stages, the fish specimens were subjected to euthanasia utilizing clove oil. The manipulation and sampling protocols were executed with a consistent approach and in strict adherence to the provisions of the Czech legislation governing the welfare of animals, as set forth in the Protection of Animals Against Cruelty Act No. 246/1992. All procedures were authorized by the Czech Ministry of Agriculture. The study is reported in accordance with ARRIVE guidelines (<https://arriveguidelines.org>). The parasite proliferative stages were isolated from the full blood (0.5–2 mL) collected from intraperitoneally injected pathogen-free (SPF) carps (total length 12.5–16 cm) using ion-exchange chromatography as outlined by<sup>26</sup>.

### Cell culture

Isolated parasite blood stages were seeded into 96-well plates at a density of 200,000 cells per well and subsequently cultured in RPMI 1640 medium (Gibco, Life Technologies) at 26 °C with 5% CO<sub>2</sub>. The medium was fortified with 20% heat-inactivated fetal bovine serum (Biosera Europe, France), 1 mL of GlutaMAX™ (ThermoFisher, USA), carp red blood cell lysate equalling 1:10 parasite cells: host cells (host cells lysed in water), and 0.008 mL of antibiotics/antimycotics (10,000 U/mL, Sigma-Aldrich, USA).

### In vitro transcription

To utilize RNAi in *S. molnari*, we employed dsRNA regarding higher efficacy and cost-effective application compared to siRNAs (reviewed in<sup>84</sup>). We selected in vitro transcription of dsRNA regarding rational experimental design and the potential off-target effect of dsRNAs according to the parameters reported by<sup>60</sup>. The cDNA templates of *ACT1* and *ACT2*<sup>28</sup> were amplified using standard PCR and gene-specific primers bearing 5' end tags of the T7 TAATACGACTCACTATAGGGAGA promoter sequence (Invitrogen, USA) (Supplementary Table 1). The amplified PCR products of optimal length (~500 bp) were subjected to electrophoresis on 1% agarose gel, extracted, and purified using a Gel/PCR DNA Fragments Extraction Kit (Geneaid Biotech Ltd, Taiwan). Subsequently, in vitro transcription was conducted by incubating 1 µg of cDNA template at 37 °C for 16 h using the MEGAscript™ T7 Transcription Kit (Invitrogen, USA), following the manufacturer's protocol. We chose green fluorescence protein (GFP) encoding sequence as a non-target control dsRNA since is absent in Myxozoa, which also supports no hits in the transcriptome search of *Sphaerospora molnari* (PRJNA522909)<sup>44</sup>. Plasmid p<sub>kp11</sub>, containing the GFP sequence insert, was kindly provided by Dr. O. Hajdušek from the laboratory of J. Perner, Institute of Parasitology, Biological Centre of the CAS, Czech Republic. One microgram of the plasmid was linearized, and the GFP insert was excised from the backbone using XbaI/AbaI restriction enzymes (Invitrogen, USA), followed by electrophoresis on a 1% agarose gel (Supplementary Fig. 4). The cleaved GFP insert was extracted using a Gel/PCR DNA Fragments Extraction Kit (Geneaid Biotech Ltd, Taiwan). The GFP T7-PCR template was amplified with T7-specific primers (Supplementary Table 1), and the resulting in vitro transcribed GFP dsRNA was tested for off-target effects on target gene expression by RT-qPCR. Thereafter, a custom synthetic non-target GFP dsRNA was acquired from Creative Biogene (New York, USA) for use in further RNAi assays.

### Optimization of dsRNA purification

Despite the setback with inefficient gene silencing of in vitro transcribed and purified dsRNAs via conventional manufacturing procedure, we troubleshoot and optimized the purification of dsRNA as the crucial step for the successful induction of RNAi in our target model species. The dsRNA encoding *ACT1* was purified to remove any residual DNA template from the in vitro transcription reaction. Three different protocols (protocols A–C) were tested, involving either inclusion (protocol A) or exclusion (protocol B) of DNase I treatment, phenol/

chloroform extraction (protocol B), and overnight ethanol precipitation (protocol C), with three replicates each. In protocol A, the dsRNA was treated with DNase I for 1 h at 37 °C, followed by increasing the volume with RNase-free H<sub>2</sub>O to 100 µL, and extraction with phenol/chloroform isoamyl alcohol (25:24:1) at room temperature. The upper phase was collected in each step. Next, the dsRNA was incubated with 2.5 equivalent volumes of RT 100% EtOH and 3 M NaOAc, overnight at –20 °C. Precipitated dsRNA was centrifuged at 15,000g for 30 min, at 4 °C, and 5 min at top speed after being washed with 70% cold EtOH. The purified dsRNA was air dried, resuspended in the original volume of 20 µL, verified on agarose gel, and the final yield was measured on the Nanodrop. For Protocol B, we omitted the phenol/chloroform extraction step, while the remainder of the purification procedure was like protocol A. In protocol C, purification of in vitro transcribed dsRNA was performed using the MEGAscript™ T7 Transcription Kit (Invitrogen, USA) according to the manufacturer's instructions. Subsequently, parasite stages were soaked with dsRNA, and gene KD efficiency was evaluated by RT-PCR of the gene target after 24 h, compared to the untreated control sample. Relative change in expression values was then calculated as a percentage change [relative expression change =  $\Delta V/V_1 \times 100\%$ ;  $\Delta V$  defines the difference between the final average expression value of KD ( $V_2$ ) and negative control expression value ( $V_1$ )]. To verify the consistency of stable gene silencing, five biological replicates were used comparing the differences in *ACT1* gene expression in treated (protocol A) and untreated samples.

### Fluorescent labeling of dsRNA

In search for optimal and effective delivery of dsRNA into the daughter cells of the cell-in-cell myxozoan stages, we employed fluorescent labeling using the Silencer™ siRNA Labeling Kit with Cy3™ dye (Invitrogen, USA) to label dsRNA of *ACT1* and non-target control *GFP* (hereafter Cy3-labeled dsRNA). The labeling process involved dsRNA incubation with 10× Labeling Buffer and Cy3™ dye at 37 °C for 1 h. Next, we added 5 M NaCl (0.1 × total volume) and 100% pre-cooled EtOH (2.5 × total volume), mixed the solution thoroughly, and incubated it at –20 °C for 30 min. The precipitated dsRNA was then centrifuged at top-speed (12,100g) at 4 °C for 20 min, and the resulting pellet was washed with 70% EtOH, followed by additional top-speed centrifugation and air drying of the pellet. Finally, the labeled dsRNA was resuspended in the original volume of RNase-free H<sub>2</sub>O. We verified the presence of the labeled dsRNA by electrophoretic assay on 1% TBE agarose gel and compared it to unlabeled dsRNA after 30 min and 24 h (n = 3, Fig. 2D). Simultaneously, *S. molnari* cells were left to soak Cy3-labeled dsRNA for 48 h and checked under Olympus FluoView FV3000 confocal laser scanning microscope equipped with FluoView FV31S-SW software (v. 2.6) with eight sampling time points (30 min, 2, 4, 6, 8, 12, 24, 48 h).

### RNAi in vitro experiments

Given the successful preliminary gene silencing, we performed RNAi assays using our optimized workflow. We targeted both actins for 48 h with eight sampling time points (30 min, 2, 4, 6, 8, 12, 24, 48 h). All experiments were performed in at least three biological and technical replicates in the total amount of 100 µL. Each experiment consisted of cells undergoing knockdown supplemented by negative control of cultured cells to monitor the expressional profile of targeted actins and one additional control using GFP dsRNA to elucidate the non-target effect during knockdown over the gene silencing duration. The cell motility was monitored in real-time timelapse videos (29.97 frames per second) using an inverted light microscope Olympus IX70. The cells were harvested and stored in an ICL fixation buffer (Qiagen, Germany) at –20 °C for RNA extraction and RT-qPCR analysis or subjected to immunolabelling or western blotting procedures, described below.

### Live cell imaging

To evaluate the effect of the knockdown of both actins on *Sphaerospora molnari* blood stage motility, we performed live cell imaging. We recorded *S. molnari* cells from RNAi assays with an inverted microscope Olympus IX70 and recorded on Canon 1300D camera. The 96-well-plated cells were imaged at 29.97 frames per second (in total 60 s) using a 40× objective lens. Recorded videos were then post-edited on the Fiji platform using ImageJ<sup>85</sup>.

### RNAi efficiency and non/off-target effect validation

To deliver sufficient dsRNA into the cells to achieve successful RNAi, different concentrations of *ACT1* dsRNA (final concentrations ranging between 0.01 and 1 µg/µL) were used for soaking the parasites stages and allowing dsRNA uptake. Differences in the relative expression of *ACT1* were tested on *GFP* dsRNA and untreated control (n = 3) to estimate the effectiveness of gene silencing at a particular concentration of dsRNA. For non-target control testing, we performed the RNAi assay with *GFP* dsRNA at a concentration of 1 µg/µL and incubated *S. molnari* cells for a total of 48 h. Cells were collected at eight sampling time points (30 min, 2, 4, 6, 8, 12, 24, 48 h) and subjected to RT-qPCR analysis targeting gene expression compared to the untreated control (n = 3). As reported previously<sup>28</sup>, *ACT1* and *ACT2* display moderate sequence similarity (around 70%). Thus, apart from analyzing the inhibitory effect on *ACT1*, we also performed an off-target effect RT-qPCR assay for *ACT2*.

### Immunolabelling

The question of whether our gene silencing of *ACT1*, previously described by<sup>28</sup>, has any effect on the actin cytoskeleton, we subjected *S. molnari* cells to confocal microscopy. For *ACT1* staining, isolated parasite blood stages were first seeded on Superfrost Plus slides using a Cytospin (centrifugation at 800g for 5 min). The cells were subsequently fixed with IC fixation buffer containing 4% paraformaldehyde (Invitrogen, USA), for 30 min at room temperature. After fixation, the cells were washed three times with PBS and blocked at room temperature for 1 h in a solution consisting of 5% (w/v) skimmed milk in 0.3% Tween20 in PBS (= PBST). Next, the cells were incubated overnight with an anti-*S. molnari* actin 1 primary antibody (polyclonal, rabbit) at a 1:500 dilution<sup>28</sup>. After three washes with PBST, the cells were stained with goat anti-rabbit IgG-Alexa Fluor Plus 647

secondary antibody and DAPI for nuclear staining at dilutions of 1:10,000. Finally, the samples were mounted using Fluoroshield Mounting Medium (Searle Diagnostic Gurr Products, United Kingdom). The slides with the stained parasite cells were imaged with an Olympus FluoView FV3000 confocal laser scanning microscope equipped with FluoView FV31S-SW software (v. 2.6). Images were then deconvolved using DeconvolutionLab2<sup>86</sup> implemented in the Fiji platform of the ImageJ software<sup>85</sup>. Labeled *ACT1* dsRNA and GFP uptake was verified via confocal microscopy at different time points from 30 min to 48 h. For each time point, cells were washed with PBS and cytopun on SuperFrost slides. The cells were then permeabilized in PBST and stained with DAPI after fixation in IC fixation buffer. The slides containing the parasite cells were imaged using confocal microscopy (see above). The fluorescent intensity was quantified by measuring the area-integrated intensity of cells and background in Z-stacks confocal images of cells (n = 10) across three independent biological replicates, using ImageJ. The corrected total cell fluorescence (CTCF) was calculated using GraphPrism (v. 6) with the formula: Integrated Density – (Area of selected cell × Mean fluorescence of background readings).

### qRT-PCR

As a reference validation for all RNAi assays, we monitored the gene expression profile of both targeted actins to check gene silencing efficiency and off-target and non-target effects. Cells that were subjected to RNAi in vitro assays were centrifuged at 800g for 10 min and fixed using RLT lysis buffer (Qiagen, Germany). The fixed cells were then stored at –20 °C until further use. Total RNA was extracted using RNeasy Mini Kit (Qiagen, Germany) according to the manufacturer's instructions, and the eluted RNA was purified using RNase-free H<sub>2</sub>O. The reverse transcription reaction was carried out using QuantiTect Reverse Transcription Kit (Qiagen, Germany). A SYBR Green assay was performed using primers targeted out of the designed region for dsRNA production of either *ACT1* or *ACT2* (Supplementary Table 1), relative to *GAPDH* and *EF-2* as housekeeping genes, validated in a previous study<sup>87</sup>.

### Actin inhibition assay

To assess the impact of actin inhibition causing ablation of cell motility (Hartigan et al. 2016) on *ACT1* and *ACT2* gene expression profiles, an in vitro assay was conducted using Cytochalasin-D (Cyto-D, Sigma-Aldrich, USA, Cas No: C8273), a pharmacological inhibitor of actin polymerization, in *Sphaerospora* cells. Specifically, the cells were cultured in a medium, previously described, that contained Cyto-D at a concentration of 0.1 μM/mL for a period of 24 h (cytochalasin D-treated cells, Cyto-D). To evaluate the effect of Cyto-D removal on the cells, the cells were subsequently washed twice at 30 min and 24 h after incubation at 800g for 10 min using RPMI 1640 medium (removal of cytochalasin D, CytoD/-). The cells were then harvested and fixed in ECL fixation buffer (Qiagen, Germany). Total RNA was extracted from the fixed cells, and RT-qPCR was performed as described above.

### Western blotting

For the protein determination during RNAi experiments, we inspected the abundance of *ACT1* via western blotting. Parasite whole-cell lysates were mixed with 2 × Laemmli sample buffer containing 10% 2-β-mercaptoethanol and heated to 97 °C for 5 min before loading onto a 12% (w/v) TGX FastCast SDS/PAGE gel. Blotted membranes were then blocked in 5% skimmed milk in PBST at room temperature for 1 h and incubated overnight with anti-*S. molnari* actin 1 primary antibody<sup>28</sup> at a dilution of 1:100. The membranes were then incubated with goat anti-rabbit horseradish peroxidase-coupled antibody at a dilution of 1:5000 using the same blocking solution as the primary antibody. The signal was detected by chemiluminescence using the Clarity Western ECL Substrate. To re-use the membranes for protein detection, they were stripped using a stripping buffer (1.5 g glycine, 0.1 g sodium dodecyl sulfate, 1 mL Tween 20, and distilled H<sub>2</sub>O for a total of 100 mL) and re-probed according to the Abcam protocol (<https://www.abcam.com/protocols/western-blot-membrane-stripping-for-restaining-protocol>). As loading control, a custom-made anti-GADPH rabbit polyclonal antibody (KPLDVPSKIGERCGRSA; Davids Biotechnologie GmbH (Germany), Supplementary Fig. 5) was used at a dilution of 1:100.

### SEM microscopy

Scanning electron microscopy was performed to visualize *S. molnari* blood stages, following the methods described by<sup>28</sup>. The cells were first fixed in 2.5% glutaraldehyde in 0.1 M phosphate buffer at 4 °C for 1 h. After washing, the cells were adhered to coverslips with poly-D-lysine (0.1%) for 30 min, followed by further fixation in 2.5% glutaraldehyde for 15 min. The cells were then post-fixed with 1% OsO<sub>4</sub>, washed in distilled water, and dehydrated in a graded acetone series (5 min at each step) before critical point drying. The coverslips were mounted on stubs, gold-sputtered, and examined using a FeG-SEM JEOL 7401 F microscope.

### Statistical analyses

Differences among protocols and treatments were statistically analyzed in R (R Core Team, v. 4.2.1), using linear models (LM, package lme4 v1.1-30), using log-transformed response variables, and followed, when necessary, by post-hoc comparisons (Tuckey multiple comparison, package multcomp v1.4-20<sup>88</sup>). Specific information on the comparisons is provided in the corresponding section. When results are provided, *est* stands for an estimate of the model, and SE for standard error. Data were graphically displayed with *ggplot2* (v3.3.6<sup>89</sup>). In the boxplots, black horizontal lines represent the median, boxes represent 50% of the values, and upper and lower whiskers represent values > 75th and < 25th percentiles. Significant differences between groups are indicated in the figures with an asterisk, following \*p < 0.05, \*\*p < 0.01, \*\*\*p < 0.001.

## Data availability

The data supporting this manuscript are available in Supplementary materials and upon request from the corresponding author.

Received: 5 December 2023; Accepted: 9 February 2024

Published online: 12 February 2024

## References

1. Elbashir, S. M. *et al.* Duplexes of 21-nucleotide RNAs mediate RNA interference in cultured mammalian cells. *Nature* **411**, 494–498. <https://doi.org/10.1038/35078107> (2001).
2. Scacheri, P. C. *et al.* Short interfering RNAs can induce unexpected and divergent changes in the levels of untargeted proteins in mammalian cells. *Proc. Natl. Acad. Sci. USA* **101**, 1892–1897. <https://doi.org/10.1073/pnas.0308698100> (2004).
3. Bridge, A. J., Pebernard, S., Ducraux, A., Nicoulaz, A. L. & Iggo, R. Induction of an interferon response by RNAi vectors in mammalian cells. *Nat. Genet.* **34**, 263–264. <https://doi.org/10.1038/ng1173> (2003).
4. Clemens, J. C. *et al.* Use of double-stranded RNA interference in *Drosophila* cell lines to dissect signal. *Proc. Natl. Acad. Sci. USA* **97**, 6499–6503. <https://doi.org/10.1073/pnas.110149597> (2000).
5. Orii, H., Mochii, M. & Watanabe, K. A simple “soaking method” for RNA interference in the planarian *Dugesia japonica*. *Dev. Genes Evol.* **213**, 138–141. <https://doi.org/10.1007/s00427-003-0310-3> (2003).
6. Eichner, C., Nilsen, F., Grotmol, S. & Dalvin, S. A method for stable gene knock-down by RNA interference in larvae of the salmon louse (*Lepeophtheirus salmonis*). *Exp. Parasitol.* **140**, 44–51. <https://doi.org/10.1016/j.exppara.2014.03.014> (2014).
7. Zhou, R., Mohr, S., Hammom, G. J. & Perrimon, N. Inducing RNAi in *Drosophila* cells by soaking with dsRNA. *Cold Spring Harb. Protoc.* <https://doi.org/10.1101/pdb.prot080747> (2014).
8. Seybold, A. C., Wharton, D. A., Thorne, M. A. S. & Marshall, C. J. Establishing RNAi in a non-model organism: The Antarctic nematode *Panagrolaimus* sp. DAW1. *PLoS One* **11**, e0166228. <https://doi.org/10.1371/journal.pone.0166228> (2016).
9. Jackson, A. L. *et al.* Expression profiling reveals off-target gene regulation by RNAi. *Nat. Biotechnol.* **21**, 635–637. <https://doi.org/10.1038/nbt831> (2003).
10. Birmingham, A. *et al.* 3' UTR seed matches, but not overall identity, are associated with RNAi off-targets. *Nat. Methods.* **3**, 199–204. <https://doi.org/10.1038/nmeth854> (2006).
11. Chen, J. *et al.* Off-target effects of RNAi correlate with the mismatch rate between dsRNA and non-target mRNA. *RNA Biol.* **18**, 1747–1759. <https://doi.org/10.1080/15476286.2020.1868680> (2021).
12. Raemdonck, K., Vandenbroucke, R. E., Demeester, J., Sanders, N. N. & De Smedt, S. C. Maintaining the silence: Reflections on long-term RNAi. *Drug Discov. Today* **21–22**, 917–931. <https://doi.org/10.1016/j.drudis.2008.06.008> (2008).
13. Gudmunds, E., Wheat, C. W., Khila, A. & Husby, A. Functional genomic tools for emerging model species. *Trends Ecol. Evol.* **37**, 1104–1115. <https://doi.org/10.1016/j.tree.2022.07.004> (2022).
14. Hou, B., Hai, Y., Buyin, B. & Hasi, S. Research progress and limitation analysis of RNA interference in *Haemonchus contortus* in China. *Front. Vet. Sci.* **10**, 1079676. <https://doi.org/10.3389/fvets.2023.1079676> (2023).
15. Morris, D. J. Cell formation by myxozoan species is not explained by dogma. *Proc. R. Soc. B* **277**, 2565–2570. <https://doi.org/10.1098/rspb.2010.0282> (2010).
16. Feist, S. W., Morris, D. J., Alama-Bermejo, G. & Holzer, A. S. Cellular process in Myxozoans. In *Myxozoan Evolution, Ecology and Development* (eds Okamura, B., Gruhl, A. & Bartholomew, J.L.), 139–154 [https://doi.org/10.1007/978-3-319-14753-6\\_8](https://doi.org/10.1007/978-3-319-14753-6_8) (Springer, 2015).
17. Eszterbauer, E., Kallert, D. M., Grabner, D. & El-Matbouli, M. Differentially expressed parasite genes involved in host recognition and invasion of the triactinomyxon stage of *Myxobolus cerebraalis* (Myxozoa). *Parasitology* **136**, 367–377. <https://doi.org/10.1017/S0031182008005398> (2009).
18. Alama-Bermejo, G., Bron, J. E., Raga, J. A. & Holzer, A. S. 3D morphology, ultrastructure and development of *Ceratomyxa puntazzi* stages: First insights into the mechanisms of motility and budding in the Myxozoa. *Plos One* <https://doi.org/10.1371/journal.pone.0032679> (2012).
19. Alama-Bermejo, G., Holzer, A. S. & Bartholomew, J. L. Myxozoan adhesion and virulence: *Ceratomyxa shasta* on the move. *Microorganisms* **7**, 397. <https://doi.org/10.3390/microorganisms7100397> (2019).
20. Sarker, S., Menanteau-Ledouble, S., Kotob, M. H. & El-Matbouli, M. A RNAi-based therapeutic proof of concept targets salmonid whirling disease in vivo. *PLoS one* **12**, e0178687. <https://doi.org/10.1371/journal.pone.0178687> (2017).
21. Holzer, A. S., Piazzon, M. C., Barrett, D., Bartholomew, J. L. & Sitjà-Bobadilla, A. To react or not to react: The dilemma of fish immune systems facing myxozoan infections. *Front. Immunol.* **12**, 734238. <https://doi.org/10.3389/fimmu.2021.734238> (2021).
22. Morris, D. J. Towards an *in vitro* culture method for the rainbow trout pathogen *Tetracapsuloides bryosalmonae*. *J. Fish Dis.* **35**, 9441–9444. <https://doi.org/10.1111/j.13652761.2012.01421.x> (2012).
23. Redondo, M. J., Palenzuela, O. & Alvarez-Pellitero, P. In vitro studies on viability and proliferation of *Enteromyxum scophthalmi* (Myxozoa), an enteric parasite of cultured turbot *Scophthalmus maximus*. *Dis. Aquat. Organ.* **55**, 133–144. <https://doi.org/10.3354/dao055133> (2003).
24. Tyutyayev, P. Organization of the chromosomal apparatus Myxozoa. *Tsitologiya* **50**, 907–910 (2008).
25. Yokoyama, H., Kageyama, M., Yanagida, T. & Ogawa, K. Seawater survival of *Enteromyxum leei* (myxozoa) evaluated by in vitro viability and in vivo infectivity assays. *Fish Pathol.* **44**, 172–177. <https://doi.org/10.3147/jsfp.44.172> (2009).
26. Born-Torrijos, A. *et al.* Method for isolation of myxozoan proliferative stages from fish at high yield and purity: An essential prerequisite for in vitro, in vivo and genomics-based research developments. *Cells* **11**, 377. <https://doi.org/10.3390/cells11030377> (2022).
27. Lom, J., Dyková, I. & Pavlásková, M. Unidentified mobile protozoans from the blood of carp and some unsolved problems of myxosporean life cycles. *J. Protozool.* **30**, 497–508. <https://doi.org/10.1111/j.1550-7408.1983.tb01411.x> (1983).
28. Hartigan, A. *et al.* New cell motility model observed in parasitic cnidarian *Sphaerospora molnari* (Myxozoa: Myxosporaea) blood stages in fish. *Sci. Rep.* **6**, 39093. <https://doi.org/10.1038/srep39093> (2016).
29. Das, S., Stortz, J. F., Meissner, M. & Periz, J. The multiple functions of actin in apicomplexan parasites. *Cell Microbiol.* **11**, e13345. <https://doi.org/10.1111/cmi.13345> (2021).
30. Brekhman, V. *et al.* Proteomic analysis of the parasitic cnidarian *Ceratomyxa shasta* (Cnidaria: Myxozoa) reveals diverse roles of actin in motility and spore formation. *Front. Mar. Sci.* **8**, 632700. <https://doi.org/10.3389/fmars.2021.632700> (2021).
31. Schmitz, S. *et al.* Malaria parasite actin filaments are very short. *J. Mol. Biol.* **349**, 113–125. <https://doi.org/10.1016/j.jmb.2005.03.056> (2005).
32. Skillman, K. M. *et al.* Evolutionarily divergent, unstable filamentous actin is essential for gliding motility in apicomplexan parasites. *PLoS Pathog.* **7**, e1002280. <https://doi.org/10.1371/journal.ppat.1002280> (2011).
33. Lu, H., Fagnant, P. M. & Trybus, K. M. Unusual dynamics of the divergent malaria parasite PfAct1 actin filament. *Proc. Natl. Acad. Sci. USA* **116**, 20418–20427. <https://doi.org/10.1073/pnas.1906600116> (2019).

34. Dorsett, Y. & Tuschl, T. siRNAs: Applications in functional genomics and potential as therapeutics. *Nat. Rev. Drug Discov.* **3**, 318–329. <https://doi.org/10.1038/nrd1345> (2004).
35. Poh, J. J. & Gan, S. K. E. The determination of factors involved in column-based nucleic acid extraction and purification. *J. Bioprocess Biotech.* **4**, 157. <https://doi.org/10.4172/2155-9821.1000157> (2014).
36. Li, C. & Zamore, P. D. Preparation of dsRNAs for RNAi by in vitro transcription. *Cold Spring Harb. Protoc.* <https://doi.org/10.1101/pdb.prot097469> (2019).
37. Timmons, L., Court, D. L. & Fire, A. Ingestion of bacterially expressed dsRNAs can produce specific and potent genetic interference in *Caenorhabditis elegans*. *Gene* **263**, 103–112. [https://doi.org/10.1016/S0378-1119\(00\)00579-5](https://doi.org/10.1016/S0378-1119(00)00579-5) (2001).
38. Nwokeoji, A. O., Kung, A. W., Kilby, P. M., Portwood, D. E. & Dickman, M. J. Purification and characterisation of dsRNA using ion pair reverse phase chromatography and mass spectrometry. *J. Chromatogr. A.* **10**, 14–25. <https://doi.org/10.1016/j.chroma.2016.12.062> (2017).
39. Worby, C. A., Simonson-Leff, N. & Dixon, J. E. RNA interference of gene expression (RNAi) in cultured *Drosophila* cells. *Sci. STKE* **95**, PL1 <https://doi.org/10.1126/stke.2001.95.pl1> (2001).
40. Saleh, M. C. *et al.* The endocytic pathway mediates cell entry of dsRNA to induce RNAi silencing. *Nat. Cell Biol.* **8**, 793–802. <https://doi.org/10.1038/ncb1439> (2006).
41. Li, X., Dong, X., Zou, C. & Zhang, H. Endocytic pathway mediates refractoriness of insect *Bactrocera dorsalis* to RNA interference. *Sci. Rep.* **5**, 8700. <https://doi.org/10.1038/srep08700> (2015).
42. Ye, C. *et al.* The involvement of systemic RNA interference deficient-1-like (SIL1) in cellular dsRNA uptake in *Acyrtosiphon pisum*. *Insect Sci.* **30**, 1393–1404. <https://doi.org/10.1111/1744-7917.13167> (2022).
43. Morris, D. J. & Adams, A. Transmission of freshwater myxozoans during the asexual propagation of invertebrate hosts. *Int. J. Parasitol.* **36**, 371–377. <https://doi.org/10.1016/j.ijpara.2005.10.009> (2006).
44. Hartigan, A., Kosakyan, A., Pecková, H., Eszterbauer, E. & Holzer, A. S. Transcriptome of *Sphaerospora molnari* (Cnidaria, Myxosporae) blood stages provides proteolytic arsenal as potential therapeutic targets against sphaerosporosis in common carp. *BMC Genomics* **21**, 404. <https://doi.org/10.1186/s12864-020-6705-y> (2020).
45. Winston, W. M., Molodowitch, C. & Hunter, C. P. Systemic RNAi in *C. elegans* requires the putative transmembrane protein SID-1. *Science* **295**, 2456–2459. <https://doi.org/10.1126/science.1068836> (2002).
46. Feinberg, E. H. & Hunter, C. P. Transport of dsRNA into cells by the transmembrane protein SID-1. *Science* **301**, 1545–1547. <https://doi.org/10.1126/science.1087117> (2003).
47. DeWitte-Orr, S., Collins, S. E., Bauer, C. M. T., Bowdish, D. M. & Mossman, K. L. An accessory to the “Trinity”: SR-As are essential pathogen sensors of extracellular dsRNA, mediating entry and leading to subsequent type I IFN responses. *PLoS Pathog.* **6**, e1000829. <https://doi.org/10.1371/journal.ppat.1000829> (2010).
48. Nellimmarla, S. *et al.* Class A scavenger receptor-mediated double-stranded RNA internalization is independent of innate antiviral signaling and does not require phosphatidylinositol 3-kinase activity. *J. Immunol.* **195**, 3858–3865. <https://doi.org/10.4049/jimmunol.1501028> (2015).
49. Wytinck, N., Manchur, C. L., Li, V. H., Whyard, S. & Belmonte, M. F. dsRNA uptake in plant pests and pathogens: Insights into RNAi-based insect and fungal control technology. *Plants* **9**, 1780. <https://doi.org/10.3390/plants9121780> (2020).
50. Layzer, J. M. *et al.* In vivo activity of nuclease-resistant siRNAs. *RNA* **10**, 766–771 (2004).
51. Pfarr, K., Heider, U. & Hoerauf, A. RNAi mediated silencing of actin expression in adult *Litomosoides sigmodontis* is specific, persistent and results in a phenotype. *Int. J. Parasitol.* **36**, 661–669. <https://doi.org/10.1016/j.ijpara.2006.01.010> (2006).
52. Hammond, S. M., Caudy, A. & Hannon, G. Post-transcriptional gene silencing by double-stranded RNA. *Nat. Rev. Genet.* **2**, 110–119. <https://doi.org/10.1038/35052556> (2001).
53. Nishide, Y. *et al.* Effectiveness of orally-delivered double-stranded RNA on gene silencing in the stinkbug *Plautia stali*. *PLoS One* **16**, e0245081. <https://doi.org/10.1371/journal.pone.0245081> (2021).
54. Niu, J. *et al.* Topical dsRNA delivery induces gene silencing and mortality in the pea aphid. *Pest Manag. Sci.* **75**, 2873–2881. <https://doi.org/10.1002/ps.5457> (2019).
55. Wang, X. *et al.* Selection of hyperfunctional siRNAs with improved potency and specificity. *Nucl. Acids Res.* **37**, e152. <https://doi.org/10.1093/nar/gkp864> (2009).
56. Peng, H. *et al.* Sustained delivery of siRNA/PEI complex from in situ forming hydrogels potently inhibits the proliferation of gastric cancer. *J. Exp. Clin. Cancer Res.* **35**, 57. <https://doi.org/10.1186/s13046-016-0334-y> (2016).
57. Kasai, H. *et al.* Efficient siRNA delivery and gene silencing using a lipopolymer hybrid vector mediated by a caveolae-mediated and temperature-dependent endocytic pathway. *J. Nanobiotechnol.* **17**, 11. <https://doi.org/10.1186/s12951-019-0444-8> (2019).
58. Cooper, A. M., Silver, K., Zhang, J., Park, Y. & Zhu, K. Y. Molecular mechanisms influencing efficiency of RNA interference in insects. *Pest Manag. Sci.* **75**, 18–28. <https://doi.org/10.1002/ps.5126> (2019).
59. Liu, S. *et al.* RNA-based technologies for insect control in plant production. *Biotechnol. Adv.* **39**, 107463. <https://doi.org/10.1016/j.biotechadv.2019> (2020).
60. Chen, J. *et al.* Transcript level is a key factor affecting RNAi efficiency. *Pestic. Biochem. Phys.* **176**, 104872. <https://doi.org/10.1016/j.pestbp.2021.104872> (2021).
61. Macel, M. L. *et al.* Sea as a color palette: The ecology and evolution of fluorescence. *Zool. Lett.* **6**, 9. <https://doi.org/10.1186/s40851-020-00161-9> (2020).
62. Shagin, D. A. *et al.* GFP-like proteins as ubiquitous Metazoan superfamily: Evolution of functional features and structural complexity. *Mol. Biol. Evol.* **21**, 841–850. <https://doi.org/10.1093/molbev/msh079> (2004).
63. Tschuch, C. *et al.* Off-target effects of siRNA specific for GFP. *BMC Mol. Biol.* **9**, 60. <https://doi.org/10.1186/1471-2199-9-60> (2008).
64. Nunes, F. M. *et al.* Non-target effects of green fluorescent protein (GFP)-derived double-stranded RNA (dsRNA-GFP) used in honey bee RNA interference (RNAi) assays. *Insects* **4**, 90–103. <https://doi.org/10.3390/insects4010090> (2013).
65. Rougeot, J., Wang, Y. & Verhulst, E. C. Effect of using green fluorescent protein double-stranded RNA as non-target negative control in *Nasonia vitripennis* RNA interference assays. *Exp. Res.* **2**, E11. <https://doi.org/10.1017/exp.2020.67> (2021).
66. Joseph, R., Srivastava, O. P. & Pfister, R. R. Downregulation of  $\beta$ -actin and its regulatory gene HuR affect cell migration of human corneal fibroblasts. *Mol. Vis.* **20**, 593–605 (2014).
67. Dunn, S. R., Phillips, W. S., Green, D. R. & Weis, V. M. Knockdown of actin and caspase gene expression by RNA interference in the symbiotic anemone *Aiptasia pallida*. *Biol. Bull.* **212**, 250–258. <https://doi.org/10.2307/25066607> (2007).
68. Killiny, N., Hajeri, S., Tiwari, S., Gowda, S. & Stelinski, L. L. Double-stranded RNA uptake through topical application, mediates silencing of five CYP4 genes and suppresses insecticide resistance in *Diaphorina citri*. *PLoS One* **9**, e110536. <https://doi.org/10.1371/journal.pone.0110536> (2014).
69. Refki, P. N., Armisen, D., Crumière, A. J., Viala, S. & Khila, A. Emergence of tissue sensitivity to Hox protein levels underlies the evolution of an adaptive morphological trait. *Dev. Biol.* **392**, 441–453. <https://doi.org/10.1016/j.ydbio.2014.05.021> (2014).
70. Wang, H., Lacoche, S., Huang, L., Xue, B. & Muthuswamy, S. K. Rotational motion during three-dimensional morphogenesis of mammary epithelial acini relates to laminin matrix assembly. *Proc. Natl. Acad. Sci. USA* **110**, 163–168. <https://doi.org/10.1073/pnas.1201141110> (2013).
71. Kuhne, W. *et al.* Disintegration of cytoskeletal structure of actin filaments in energy-depleted endothelial cells. *Am. J. Physiol.* **264**, H1599–H1608. <https://doi.org/10.1152/ajpheart.1993.264.5.H1599> (1993).

72. Rivera, A. S. *et al.* RNA interference in marine and freshwater sponges: actin knockdown in *Tethya wilhelma* and *Ephydatia muelleri* ingested dsRNA expressing bacteria. *BMC Biotechnol* **11**, 67. <https://doi.org/10.1186/1472-6750-11-67> (2011).
73. Vanslebrouck, B., Ampe, C. & van Hengel, J. Time for rethinking the different  $\beta$ -actin transgenic mouse models?. *Cytoskeleton (Hoboken, N.J.)* **77**, 527–543. <https://doi.org/10.1002/cm.21647> (2020).
74. Gerisch, G. *et al.* Mobile actin clusters and traveling waves in cells recovering from actin depolymerization. *Biophys. J.* **87**, 3493–3503. <https://doi.org/10.1529/biophysj.104.047589> (2004).
75. Dugina, V., Zwaenepoel, L., Gabbiani, G., Clément, S. & Chaponnier, C. Beta and gamma-cytoplasmic actins display distinct distribution and functional diversity. *J. Cell Sci.* **122**, 2980–2988. <https://doi.org/10.1242/jcs.041970> (2009).
76. Pearson, C. W. & Hunter, T. Real-time imaging reveals that noninvasive mammary epithelial acini can contain motile cells. *J. Cell Biol.* **179**, 1555–1567. <https://doi.org/10.1083/jcb.200706099> (2007).
77. Murrell, M., Oakes, P., Lenz, M. & Gardel, M. L. Forcing cells into shape: The mechanics of actomyosin contractility. *Nat. Rev. Mol. Cell Biol.* **16**, 486–498. <https://doi.org/10.1038/nrm4012> (2015).
78. Sympton, C. J., Singleton, D. & Geoghegan, T. E. Cytochalasin D-induced actin gene expression in murine erythroleukemia cells. *Exp. Cell Res.* **205**, 225–231. <https://doi.org/10.1006/excr.1993.1080> (1993).
79. Brett, J. G. & Tannenbaum, J. Cytochalasin D-induced increase in actin synthesis and content in a variety of cell types. *Cell Biol. Int. Rep.* **9**, 723–730. [https://doi.org/10.1016/0309-1651\(85\)90080-3](https://doi.org/10.1016/0309-1651(85)90080-3) (1985).
80. Luxenburg, C., Amalia Pasolli, H., Williams, S. E. & Fuchs, E. Developmental roles for Srf, cortical cytoskeleton and cell shape in epidermal spindle orientation. *Nat. Cell Biol.* **13**, 203–214. <https://doi.org/10.1038/ncb2163> (2011).
81. Bunnell, T. M., Burbach, B. J., Shimizu, Y. & Ervasti, J. M.  $\beta$ -Actin specifically controls cell growth, migration, and the G-actin pool. *Mol. Biol. Cell.* **21**, 4047–4058. <https://doi.org/10.1091/mbc.E11-06-0582> (2011).
82. Vedula, P. *et al.* Diverse functions of homologous actin isoforms are defined by their nucleotide, rather than their amino acid sequence. *Elife* **6**, e31661. <https://doi.org/10.7554/eLife.31661> (2017).
83. Larive, R. M., Baisamy, L., Urbach, S., Coopman, P. & Bettache, N. Cell membrane extensions, generated by mechanical constraint, are associated with a sustained lipid raft patching and an increased cell signaling. *Biochim. Biophys. Acta.* **1798**, 389–400. <https://doi.org/10.1016/j.bbame.2009.11.016> (2010).
84. Xu, W., Jiang, X. & Huang, L. RNA interference technology. In *Comprehensive Biotechnology*. 3rd edn (ed. Moo-Young, M.). 560–575 <https://doi.org/10.1016/B978-0-444-64046-8.00282-2> (Pergamon, 2019).
85. Schindelin, J. *et al.* Fiji: An open-source platform for biological-image analysis. *Nat. Methods* **9**, 676–682. <https://doi.org/10.1038/nmeth.2019> (2013).
86. Sage, D. *et al.* DeconvolutionLab2: An open-source software for deconvolution microscopy. *Methods (San Diego, Calif.)* **115**, 28–41. <https://doi.org/10.1016/j.jymeth.2016.12.015> (2017).
87. Kosakyan, A. *et al.* Selection of suitable reference genes for gene expression studies in myxosporean (Myxozoa, Cnidaria) parasites. *Sci. Rep.* **9**, 15073. <https://doi.org/10.1038/s41598-019-51479-0> (2019).
88. Hothorn, T., Bretz, F. & Westfall, P. Simultaneous inference in general parametric models. *Biom. J.* **50**, 346–363. <https://doi.org/10.1002/bimj.200810425> (2008).
89. Wickham, H. *ggplot2: Elegant Graphics for Data Analysis*. ISBN 978-3-319-24277-4. <https://ggplot2.tidyverse.org> (Springer, 2016).

## Acknowledgements

This work was supported by the Czech Science Foundation [20-30321Y to A.K., 21-16565S to J.K. and 19-28399X to A.S.H.]. We thank to Dr. Ondřej Hajdušek (Institute of Parasitology, Biology Centre CAS, Czech Republic), who kindly provided pkp11 GFP plasmid. We also thank Dr. Pavla Bartošová-Sojková (Institute of Parasitology, Biology Centre CAS, Czech Republic), for providing loading control GAPDH antibody and Dr. Tze-Ho Justin Chan (Division of Fish Health, University of Veterinary Medicine, Veterinärplatz 1, 1210 Vienna, Austria), Dr. Zdeněk Paris and Dr. Alena Panicucci Zíková (Institute of Parasitology, Biology Centre CAS, Czech Republic), for help and consulting the design and results.

## Author contributions

J.K. and A.K. contributed to the conception and design of the study. J.K. conducted the experimental procedures and analyzed the data. Writing-Original Draft, J.K. Review & Editing, A.B.T., A.S.H., and A.K. A.B.T. performed the statistical analyses. J.K. and A.B.T. created figures and performed data interpretation. A.S.H. contributed to data interpretation and result discussion. A.K. initiated the research project, received the funding, and conceived the study.

## Competing interests

The authors declare no competing interests.

## Additional information

**Supplementary Information** The online version contains supplementary material available at <https://doi.org/10.1038/s41598-024-54171-0>.

**Correspondence** and requests for materials should be addressed to J.K.

**Reprints and permissions information** is available at [www.nature.com/reprints](http://www.nature.com/reprints).

**Publisher's note** Springer Nature remains neutral with regard to jurisdictional claims in published maps and institutional affiliations.



**Open Access** This article is licensed under a Creative Commons Attribution 4.0 International License, which permits use, sharing, adaptation, distribution and reproduction in any medium or format, as long as you give appropriate credit to the original author(s) and the source, provide a link to the Creative Commons licence, and indicate if changes were made. The images or other third party material in this article are included in the article's Creative Commons licence, unless indicated otherwise in a credit line to the material. If material is not included in the article's Creative Commons licence and your intended use is not permitted by statutory regulation or exceeds the permitted use, you will need to obtain permission directly from the copyright holder. To view a copy of this licence, visit <http://creativecommons.org/licenses/by/4.0/>.

© The Author(s) 2024